



20.5×15.4×22.1

Features

- Switching capacity up to 40A.
- Small size ,lightweight.
- Working temperature 125°C.

Model in the list

Terminal	Contact Arrangement	Enclosure	
		Sealed type	Dust cover
Plug-in	1A	Coil Power	
	1C	1.5W	1.8W

Ordering Information

NVF16 - A - Z - DC12V - R
 1 2 3 4 5

1 Part number: NVF16
 2 Contact arrangement: A:1A;C:1C
 3 Enclosure: S: Sealed type; Z: Dust cover

4 Coil rated voltage(V):DC:12,24
 5 Coil transient suppression: NIL:standard;
 R:with resistor;
 D:with diode;

Contact Data

Contact Arrangement	1A(SPSTNO) 1C(SPDT(B-M))	
Contact Material	AgSnO ₂	
Contact Rating (resistive)	See table 1	
Max. Switching Power	560W	
Max. Switching Voltage	28VDC	
Max. Switching Current	40A	
Maximum inrush current	NO:90A;NC:25A	
Contact Resistance	≤50mΩ(6VDC 1A)	
Operation life	Electrical	1×10 ⁵
	Mechanical	1×10 ⁶

Characteristics

Insulation Resistance	100MΩ min(at 500VDC)
Dielectric Strength	
Between Contacts	50Hz 500V
Between Contact & Coil	50Hz 500V
Shock resistance	Function:100m/s ² 11ms Survival:1000m/s ² 11ms
Vibration resistance	Function:10Hz~55Hz Double amplitude 1.5mm Survival:10Hz~55Hz Double amplitude 1.5mm
Solderability	260°C ±5°C 5s±0.5s
Terminals strength	Pull & push ≥100N
Ambient Temperature	-40°C~125°C(-40° F~257° F)
Relative Humidity	35%~85%(at40°C)
Mass	Approx. 18g

Caution: The above value is the original value.

Table 1 Contact Rating

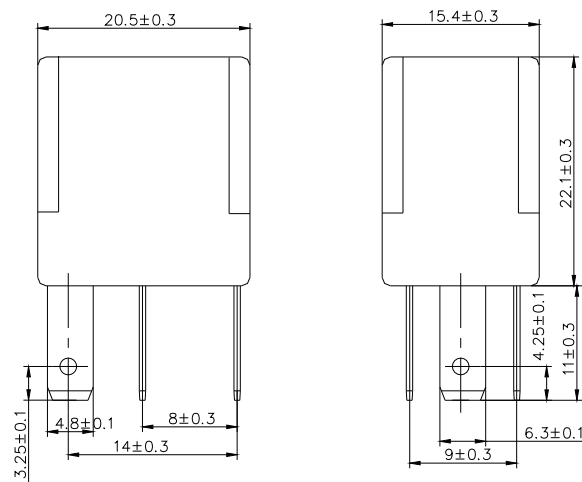
Standard	1A	1C
Contact Voltage(12V)	35A/14VDC, 40A/14VDC	NO:35A/14VDC NC:20A/14VDC
Contact Voltage(24V)	15A/28VDC, 20A/28VDC	NO:15A/28VDC NC:10A/28VDC

Coil Parameter

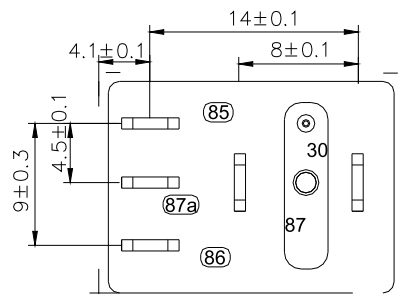
Dash numbers	Coil voltage VDC		Coil resistance $\Omega \pm 10\%$		With Suppression Resistive	Pick up voltage VDC(max) (65% of rated voltage)	Release voltage VDC(min) (10% of rated voltage)	Coil power consumption W	Operate Time ms	Release Time ms
	Rated	Max.	Without Resistive	With Resistive						
012-1500	12	16	96	84	680	7.2	1.2	1.5	<10	≤ 10
024-1800	24	32	320	286	2700	14.4	2.4	1.8	<10	≤ 10

CAUTION: 1.The use of any coil voltage less than the rated coil voltage will compromise the operation of the relay.
2.Pickup and release voltage are for test purposes only and are not to be used as design criteria.

Dimensions、Wiring diagram、Mounting(mm)

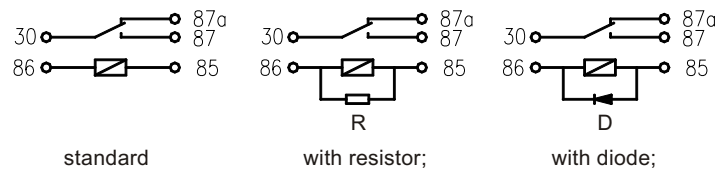


Dimensions



Mounting (Bottom view)

NOTE: A Form: Without 87a



Wiring diagram (Bottom view)