

# NVF16



20.5×15.4×22.1

## Features

- General-purpose relay with small size.
- Small volume and light weight.
- Operation temperature can achieve 125°C.
- Contact rating: 35A and 40A versions are available.

## Ordering Information

### NVF16 A Z 35 DC12V R

1	2	3	4	5	6
1 Part number: NVF16	2 Contact arrangement: A:1A;C:1C		4 Contact rating:		
3 Enclosure: S: Wash tight Z: Flux proof			12V:1A:35A/14VDC;1C:NO:35A/14VDC;NC:20A/14VDC 1A:40A/14VDC(Special clients) 24V:NO:15A,20A/28VDC;NC:10A/28VDC		
			5 Coil rated voltage(V):DC:12,24		
			6 Coil transient suppression: NIL:standard R:with resistor D:with diode		

## Contact Data

Contact Arrangement	1A(SPSTNO) 1C(SPDT(B-M))		
Contact Material	AgSnO <sub>2</sub>		
Contact Rating (Resistive)	Coil rated voltage	1A	1C
	12V	35A/14VDC, 40A/14VDC	NO:35A/14VDC NC:20A/14VDC
	24V	15A/28VDC, 20A/28VDC	NO:15A/28VDC NC:10A/28VDC
Max. Switching Power	560W		
Max. Switching Voltage	30VDC	Max. Switching Current:40A	
Voltage Drop(Initial)	Typ. 50mV (at 10A)	Item 4.12 of IEC 61810-7	
Operation	Electrical	1×10 <sup>5</sup>	Item 4.30 of IEC 61810-7
Life	Mechanical	1×10 <sup>7</sup>	Item 4.31 of IEC 61810-7

## Coil Parameter

Dash numbers	Coil voltage VDC		Coil resistance Ω ±10%		With Suppression Resistive	Pick-up voltage VDC(max) (65%of rated voltage)	Drop-out voltage VDC(min) (10% of rated voltage)	Coil power W	Operate time ms	Release time ms
	Rated	Max.	Without Resistive	With Resistive						
012-1500	12	16	96	84	680	7.8	1.2	1.5	≤10	≤10
024-1800	24	32	320	286	2700	15.6	2.4	1.8	≤10	≤10

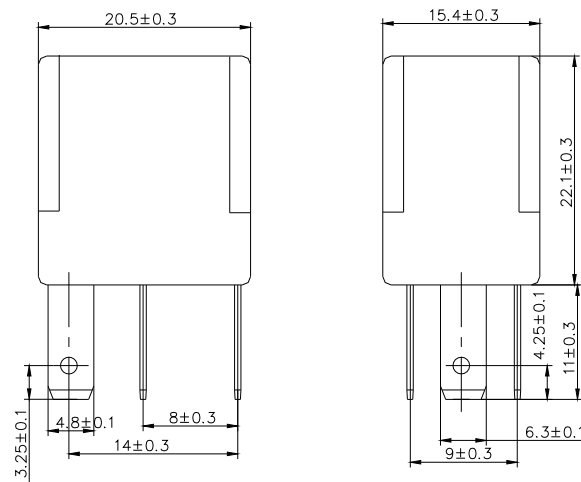
- CAUTION:** 1.The use of any coil voltage less than the rated coil voltage will compromise the operation of the relay.  
2.Pickup and release voltage are for test purposes only and are not to be used as design criteria.

## Characteristics

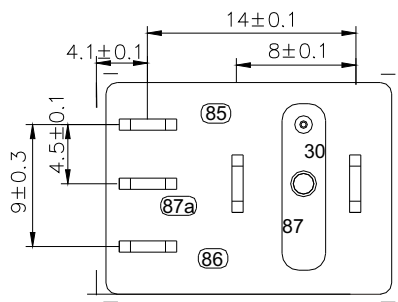
Insulation Resistance	100M $\Omega$ min (at 500VDC)	Item 4.11 of IEC 61810-7
Dielectric Strength Between Contacts Between Contact and Coil	50Hz 500V 50Hz 500V	Item 4.9 of IEC 61810-7 Item 4.9 of IEC 61810-7
Shock Resistance	Functional:98m/s <sup>2</sup> 11ms	Item 4.26 of IEC 61810-7
	Destructive:980m/s <sup>2</sup> 11ms	
Vibration Resistance	Functional:10Hz~55Hz Double amplitude 1.5mm	Item 4.28 of IEC 61810-7
	Destructive:10Hz~55Hz Double amplitude 1.5mm	
Terminals Strength	100N	Item 4.24 of IEC 61810-7
Ambient Temperature	-40℃~125℃	
Relative Humidity	5% to 85%	Item 4.16 of IEC 61810-7
Mass	18g	Item 4.7 of IEC 61810-7

## Dimensions

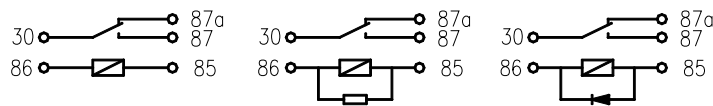
mm



Dimensions



Mounting (Bottom view)



Wiring diagram(Bottom view)

Note: A type without 87a.

## Reference Data

