

# NT76



22.3×16.6×11(1C) 23×16.1×11(1A)

us E160644 R50126372  
 08001023387

## Features

- Super light in weight.
- High sensitivity.
- 16A switching capacity.
- PC board mounting.

## Ordering Information

**NT76 - A - S - 12VDC**

1      2      3      4

1 Part number: NT76  
 2 Contact arrangement: A:1A; C:1C  
 3 Enclosure: S: Wash tight; Z: Flux proof

4 Coil rated voltage(V): DC:5,6,9,12,18,24,48

## Contact Data

Contact Arrangement	1A(SPSTNO) 1C(SPDT(B-M))	
Contact Material	AgSnO <sub>2</sub>	
Contact Rating	NO: 16A/250VAC, 30VDC NC: 10A/250VAC,30VDC TüV: 16A/250VAC,14VDC	
Max. Switching Power	480W 4000VA	
Max. Switching Voltage	30VDC 277VAC	Max. Switching Current:16A
Contact Resistance	≤50mΩ	Item 4.12 of IEC 61810-7
Electrical Endurance	1×10 <sup>5</sup>	Item 4.30 of IEC 61810-7
Mechanical Endurance	1×10 <sup>7</sup>	Item 4.31 of IEC 61810-7

## Coil Parameter

Dash numbers	Coil voltage VDC		Coil resistance Ω ± 10%	Pick-up voltage VDC(max) (75% of rated voltage)	Drop-out voltage VDC(min) (5% of rated voltage)	Coil power W	Operate time ms	Release time ms
	Rated	Max.						
1A								
005-200	5	6.5	125	3.75	0.25	0.20	≤10	≤5
006-200	6	7.8	180	4.50	0.30			
009-200	9	11.7	405	6.75	0.45			
012-200	12	15.6	720	9.00	0.60			
018-200	18	23.4	1620	13.5	0.90			
024-200	24	31.2	2880	18.0	1.20			
1C								
005-450	5	6.5	56	3.75	0.25	0.45	≤10	≤5
006-450	6	7.8	80	4.50	0.30			
009-450	9	11.7	180	6.75	0.45			
012-450	12	15.6	320	9.00	0.60			
018-450	18	23.4	720	13.5	0.90			
024-450	24	31.2	1280	18.0	1.20			
048-450	48	52.8	5120	38.4	2.40			

**Notes:** 1. The use of any coil voltage less than the rated coil voltage will compromise the operation of the relay.  
 2. Pick-up and drop-out voltage are for test purposes only and are not to be used as design criteria.

## Characteristics

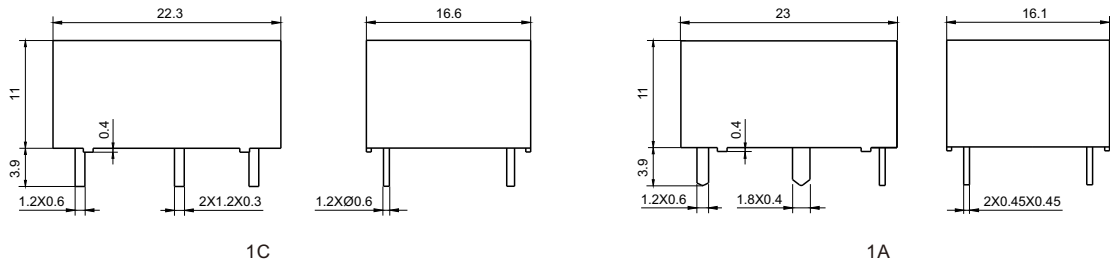
Insulation Resistance	100MΩ min (at 500VDC)	Item 4.11 of IEC 61810-7
Dielectric Strength Between Contacts Between Contact and Coil	1000VAC 1min 2500VAC 1min	Item 4.9 of IEC 61810-7
Shock Resistance	98m/s <sup>2</sup> 11ms	Item 4.26 of IEC 61810-7
Vibration Resistance	10Hz~55Hz Double amplitude 1.5mm	Item 4.28 of IEC 61810-7
Terminals Strength	10N	Item 4.24 of IEC 61810-7
Ambient Temperature	-40℃~85℃	
Relative Humidity	5%~85%	Item 4.16 of IEC 61810-7
Weight (Approx.)	10g	Item 4.7 of IEC 61810-7

## Safety Approvals

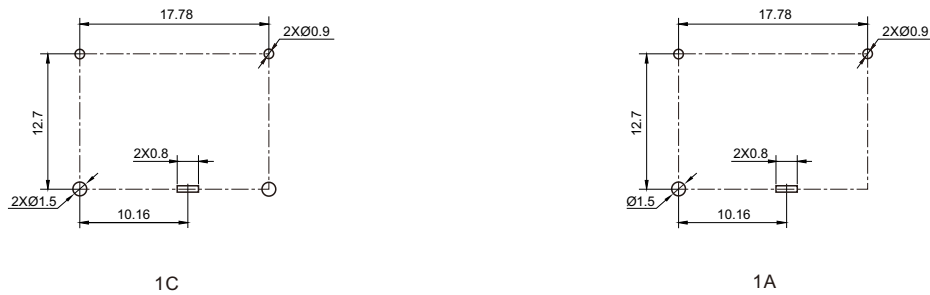
Safety approval	UL&CUR	TüV	CQC
Load	1A:16A/250VAC;1C: 10A/250VAC	16A/250VAC,14VDC	16A/250VAC

## Dimensions

mm



Dimensions



Mounting (Bottom view)



Wiring diagram(Bottom view)

**Remark:** In case of no tolerance shown in outline dimension: outline dimension ≤1mm, tolerance should be ±0.2mm ; outline dimension >1mm and ≤5mm, tolerance should be ±0.3mm; outline dimension >5mm, tolerance should be ±0.4mm.