





18.4 × 15.2 × 10.2

# NT77

 us E158859 
  R50126372  
 08001023386

## Features

- Super light in weight.
- High sensitivity.
- 12A switching capacity.
- PC board mounting.

## Ordering Information

**NT77 A S 10 DC12V**

1      2      3      4      5

1 Part number: NT77  
 2 Contact arrangement: A:1A  
 3 Enclosure: S: Wash tight: NIL: Flux proof.

4 Contact current: 10:10A; 12:12A  
 5 Coil rated voltage(V): DC:3,5,6,9,12,18,24

## Contact Data

Contact Arrangement	1A(SPSTNO)	
Contact Material	AgSnO <sub>2</sub>	
Contact Rating	10A/277VAC,30VDC; 12A/125VAC,250VAC,30VDC	
Max. Switching Power	360W 3000VA	
Max. Switching Voltage	30VDC 277VAC	Max. Switching Current:12A
Contact Resistance	≤100mΩ	Item 4.12 of IEC 61810-7
Electrical Endurance	1 × 10 <sup>5</sup>	Item 4.30 of IEC 61810-7
Mechanical Endurance	1 × 10 <sup>7</sup>	Item 4.31 of IEC 61810-7

## Coil Parameter

Dash numbers	Coil voltage VDC		Coil resistance Ω ± 10%	Pick-up voltage VDC(max) (75%of rated voltage )	Drop-out voltage VDC(min) (5% of rated voltage)	Coil power W	Operate time ms	Release time ms
	Rated	Max.						
003-450	3	3.3	20	2.25	0.15	0.45	≤8	≤5
005-450	5	5.5	56	3.75	0.25			
006-450	6	6.6	80	4.50	0.30			
009-450	9	9.9	180	6.75	0.45			
012-450	12	13.2	320	9.00	0.60			
018-450	18	19.8	720	13.5	0.90			
024-450	24	26.4	1280	18.0	1.20			

**Notes:** 1. The use of any coil voltage less than the rated coil voltage will compromise the operation of the relay.  
 2. Pick-up and drop-out voltage are for test purposes only and are not to be used as design criteria.

## Characteristics

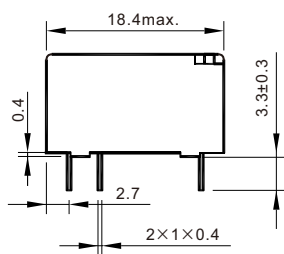
Insulation Resistance	100MΩ min (at 500VDC)	Item 4.11 of IEC 61810-7
Dielectric Strength Between Contacts Between Contact and Coil	1000VAC 1min 2500VAC 1min	Item 4.9 of IEC 61810-7
Shock Resistance	98m/s <sup>2</sup> 11ms	Item 4.26 of IEC 61810-7
Vibration Resistance	10Hz~55Hz Double amplitude 1.5mm	Item 4.28 of IEC 61810-7
Terminals Strength	5N	Item 4.24 of IEC 61810-7
Ambient Temperature	-40℃~85℃	
Relative Humidity	5% to 85%	Item 4.16 of IEC 61810-7
Weight (Approx.)	7g	Item 4.7 of IEC 61810-7

## Safety Approvals

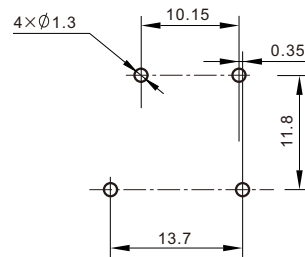
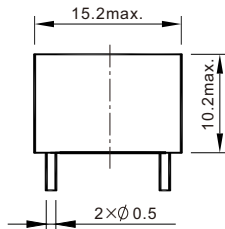
Safety approval	UL&CUR	TüV	CQC
Load	12A/125VAC; 10A/277VDC; 30VDC	12A/250VAC,30VDC	12A/250VAC

## Dimensions

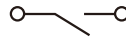
mm



Dimensions



Mounting (Bottom view)



Wiring diagram  
(Bottom view)

**Remark:** In case of no tolerance shown in outline dimension: outline dimension ≤1mm, tolerance should be ±0.2mm ;  
outline dimension >1mm and ≤5mm, tolerance should be ±0.3mm; outline dimension >5mm, tolerance should be ±0.4mm.

## Reference Data

